



PREMAIRE

Your Premier HVAC Solution Provider

WWW.PREMAIRE.CO | 1.800.289.7736



The mission of Prem Sales, LLC is to grow by providing quality products and services to our customers that meet or exceed their expectations. Our commitment to leading edge technology and skilled, friendly people will perpetuate our relationship with those we serve.



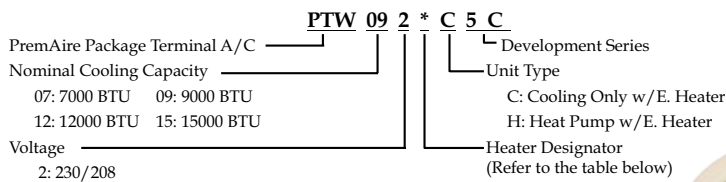
Prem Sales, LLC was founded by the Patel family in Lubbock, Texas in 1985. Since the company's inception, it has grown from 2 to 19 employees, and has expanded its warehousing facilities 20 fold. Prem now services air conditioning customers across the nation. Henry Patel is the founder of Prem Sales, LLC and remains its CEO today. Because he owns and operates several properties, Henry is acutely aware of the needs of the hospitality industry. He has designed PremAire air conditioners to meet those needs and has a trained staff to assist customers from the design, shipping, service and maintenance phases of the business. Just as in his hotel business, Henry thrives on repeat customers. He is able to maintain and grow his customer base from replacements to new construction with quality people, products and services.

PTW 42" Series – 230/208 VOLT & 265/277 VOLT



- Easy to Operate Touch Panel Control
- Temperature Limiting Function
- Energy Efficient Operation with High EER (up to 12.1)
- Automatic Emergency Heat (H/P Only)
- Hand Held Remote Control (Optional)
- Compressor Restart Function
- Quiet 2 Fan Motors Operation
- Switching Fahrenheit to Celsius
- Microprocessor Control
- Self Diagnostic Function
- Fan Cycle Function
- Overload Prevention
- 2-Way Adjustable Discharge Louver
- Fan Speed Selector
- Front Desk Control Capability
- High Pressure Switch
- Wired & Wireless Remote Thermostat Control Capability
- Load Shedding Control Capability

Model Identification



Receptacles 230/208V Model



Tandem
230/208V 15 Amp
NEMA6-15R



Perpendicular
230/208V 20 Amp
NEMA6-20R



Large tandem
230/208V 30 Amp
NEMA6-30R

Receptacles 265V Model



265V 15 Amp
NEMA7-15R



265V 20 Amp
NEMA7-20R;



265V 30 Amp
NEMA7-30R;



Heater Specification Table 208/230V Model

Heater Designator	Heater Amp	Heater (Kw)	Amp	BTU/h	NEMA Number
2	10.9/9.8	2.5	15	6970/8530	NEMA6-15R
3	13/11.8	3.6	20	8300/11800	NEMA6-20R
5	21.7/19.7	5	30	13900/17000	NEMA6-30R

Heater Specification Table 265V Model

Heater Designator	Heater Amp	Heater (Kw)	Amp	BTU/h	NEMA Number
3	9.4	3	15	8530	NEMA7-15R
4	11.3	4	20	11800	NEMA7-20R
5	18.9	5	30	17000	NEMA7-30R

230/208V MODEL

COOLING WITH ELECTRIC HEATING MODEL

Model Number	PTW0723C5C	PTW0923C5C	PTW1223C5C	PTW1225C5C	PTW1523C5C	PTW1525C5C	PTW0923C6C	PTW1223C6C
Voltage Rating	230/208	230/208	230/208	230/208	230/208	230/208	230/208	230/208
Cooling Capacity (BTU/h)	6800/7200	9300/9500	11800/12000	12200/12000	14300/14500	15200/15000	9300/9500	12200/12500
EER	11.97	11.7	10.7	10.7	10.2	9.55	12.1	11.7
Refrigerant Type	R-410A	R-410A	R-410A	R-410A	R-410A	R-410A	R-410A	R-410A
CFM Hi	410	410	470	405	470	405	410	470
CFM Low	365	365	410	333	410	333	365	410
Cooling Amp	2.7/2.8	3.7/3.9	5.1/5.4	5.1/5.5	6.3/6.8	6.9/7.5	3.6/3.8	4.8/5.1
Cooling Watts	605/570	835/795	1140/1100	1170/1150	1420/1400	1590/1570	765/785	1050/1075
Approximate Weight (Ship)	135	135	135	135	135	135	135	135

HEAT PUMP MODEL

Model Number	PTW0723H5C	PTW0923H5C	PTW1223H5C	PTW1225H5C	PTW1523H5C	PTW1525H5C	PTW0923H6C	PTW1223H6C
Voltage Rating	230/208	230/208	230/208	230/208	230/208	230/208	230/208	230/208
Cooling Capacity (BTU/h)	6800/7200	9300/9500	11800/12000	12200/12000	14300/14500	15200/15000	9300/9500	12200/12500
EER	11.97	11.7	10.7	10.7	10.2	9.55	12.1	11.7
Refrigerant Type	R-410A	R-410A	R-410A	R-410A	R-410A	R-410A	R-410A	R-410A
Reverse Cycle Heat (BTU/h)	6400/6100	8500/8300	11000/10800	11200/11000	13200/13600	14200/14000	8300/8500	11000/11400
COP	3.35	3.55	3.51	3.51	3.38	3.0	3.55	3.52
CFM Hi	410	410	470	405	470	405	410	470
CFM Low	365	365	410	333	410	333	365	410
Cooling Amp	2.7/2.8	3.7/3.9	5.1/5.4	5.1/5.5	6.3/6.8	6.9/7.5	3.6/3.8	4.8/5.1
Cooling Watts	605/570	835/795	1140/1100	1170/1150	1420/1400	1590/1570	785/765	1075/1050
Heating Amp	2.5/2.6	3.1/3.3	4.2/4.5	4.5/4.9	5.2/5.6	6.0/6.6	3.1/3.3	4.4/4.7
Heating Watts	560/535	710/685	950/900	1040/1025	1180/1155	1385/1370	710/685	950/915
Approximate Weight (Ship)	135	135	135	135	135	135	135	135

265V MODEL

COOLING WITH ELECTRIC HEATING MODEL

Model Number	PTW0734C5C	PTW0934C5C	PTW1234C5C	PTW1235C5C	PTW1535C5C	PTW0934C6C	PTW1234C6C
Voltage Rating	265	265	265	265	265	265	265
Cooling Capacity (BTU/h)	7000	9200	12000	12000	15000	9500	12500
EER	12.1	11.5	10.6	10.4	9.5	12.1	11.7
Refrigerant Type	R-410A	R-410A	R-410A	R-410A	R-410A	R-410A	R-410A
CFM Hi	660	650	680	405	405	650	680
CFM Low	450	440	530	333	333	440	530
Cooling Amp	2.3	3.3	4.5	4.5	6.0	3.0	4.1
Cooling Watts	580	800	1130	1154	1580	785	1075
Approximate Weight (Ship)	135	135	135	135	135	135	135

HEAT PUMP MODEL

Model Number	PTW0734H5C	PTW0934H5C	PTW1234H5C	PTW1235H5C	PTW1535H5C	PTW0934H6C	PTW1234H6C
Voltage Rating	265	265	265	265	265	265	265
Cooling Capacity (BTU/h)	7000	9200	12000	12000	15000	9500	12500
EER	12.1	11.5	10.6	10.4	9.5	12.1	11.7
Refrigerant Type	R-410A	R-410A	R-410A	R-410A	R-410A	R-410A	R-410A
Reverse Cycle Heat (BTU/h)	6100	8500	11400	11000	14000	8500	11400
COP	3.4	3.51	3.34	3.10	2.9	3.51	3.51
CFM Hi	660	650	680	405	405	650	680
CFM Low	450	440	530	333	333	440	530
Cooling Amp	2.3	3.3	4.5	4.5	6.0	3.0	4.1
Cooling Watts	580	800	1130	1154	1580	785	1075
Heating Amp	2.1	2.9	3.9	3.9	5.4	2.7	3.6
Heating Watts	525	710	1000	1046	1415	710	950
Approximate Weight (Ship)	135	135	135	135	135	135	135

Because these products are subject to continuous improvements, PremAire reserves the right to modify product design and specifications without notice and without incurring any obligations.

PTW 42" Series Accessories



RAB71B Standard Wall Case

The RAB71A is a galvanized steel wall sleeve with expanded polystyrene foam insulation. It is mechanically fastened and protected with baked-on enamel and protected with a sealing compound to prevent rust. The RAB71A wall case accepts all PremAire PTAC chassis models.

Also available with extended depths:

- Dimension - 42" Wide x 16" High x 13 3/4" Deep
- RAB7116—16" deep
- RAB7128—28" deep
- RAB7124—24" deep
- RAB7131—31" deep



RAB77B Fiberglass Reinforced Polyester Compound Wall Case

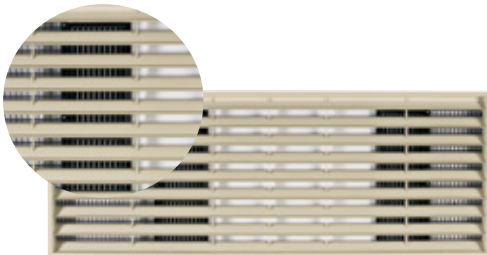
Fiberglass-reinforced polyester compound to produce a durable, non-corrosive wall case for all PremAire PTAC chassis model.

- Dimension - 42 1/8" Wide x 16 1/4" High x 13 7/8" Deep



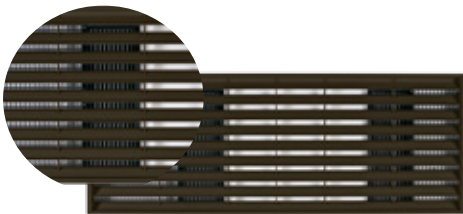
RAG60 Stamped Aluminum Exterior Rear Grille

The standard exterior grille is made of durable aluminum to protect chassis components and minimize air recirculation.



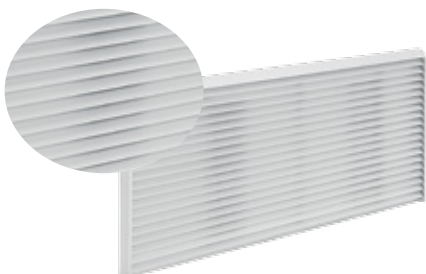
RAG61 - Beige Color Architectural Rear Grille

Optional, one-piece molded grille and frame assembly or improved appearance and protection. Grilles are molded and have a slightly textured, colorfast surface to blend with most walls.



RAG63 - Dark Brown Color Architectural Rear Grille

Optional, one-piece molded grille and frame assembly for improved appearance and protection. Grilles are molded and have a slightly textured, colorfast surface to blend with most walls.



RAG67 Aluminum Architectural Outdoor Grille

- Extruded aluminum outdoor grille for use with RAB71A RAB77A4, and extended wall cases
- Grilles are paintable to match building décor



PTK01DK
Internal/External Drain Kit

For more positive control of condensate water, the PTK01DK drain kit routes condensate to the exterior or to the interior of the building through the wall case. Suitable provision (field applied) should be made to connect the PTK01DK drain tube to a drain system in the building. Drain tube assemblies are 1/2" OD copper and consist of a short right-angle tube and a 6"-long straight tube to suit the particular application.



AW7811-EE Universal Non-Programmable Digital Remote Wall Thermostat With 2 Fan Speed, Single Stage Heating Model C3G Series

AW7811-HP Universal Non-Programmable Digital Remote Wall Thermostat With 2 Fan Speed, 2 Stage Heating Model H3G Series

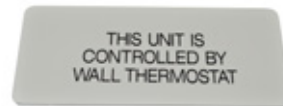
24V AC digital remote wall thermostat with single-stage cooling and 2-stage heating for electric & heat pump models.

•Requires 8 conductor thermostat wire (Recommended)



T631W-2
Wireless Digital Remote Wall Thermostat

Universal Non-Programmable Digital Remote Wall Thermostat with 2 Fan Speed, 2 Stage Heating



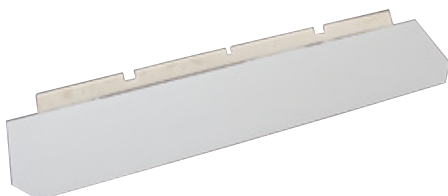
PTK01RCP

The PTK01RCP provides a cover for the control area to refer room occupant to use a remote thermostat. Double-sided tape provided.

RAK204 (230/208 & 265/277 Volt)
Electrical & Non-Electrical Standard Sub-Base

The RAK204 sub-base is made of heavy-gauge steel to provide support of the wall case. It has full base enclosure with breakaway side channels, simple connection to wall case and 4-point leveling legs. The sub-base will adapt to service conduit, circuit breakers and receptacles up to 30 amps. It may also be used as a non-electrical sub-base to provide support for the unit.

Part Number	Volts	Heater Wattage	Ampacity	Part Number	Volts	Heater Wattage	Ampacity
RAK204D15C	230/208V	2 kw	15	RAK204E15	265/277V	2 kw	15
RAK204D20C	230/208V	3 kw	20	RAK204E20	265/277V	3 kw	20
RAK204D30C	230/208V	5 kw	30	RAK204E30	265/277V	5 kw	30
				RAK204U	Non-Electrical	N/A	N/A



PTK01ADK
Air Deflector Kit

Defuses air directly into room to prevent air blowing into curtains.

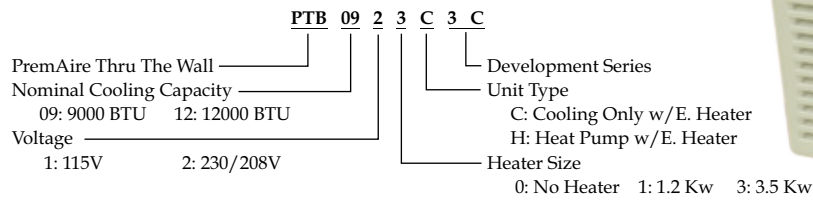
PTB 26" Series



- 9 different models which include a variety of cooling, Cool/Heat and Heat Pump
- Quiet 2 Fan Motor Operation
- 3 Fan Speeds (Hi, Mid, Low)
- Energy Saver Mode
- Hand Held Remote Control (Optional)
- Solid State Control
- Up Front Slide Out Washable Air Filter
- Two Fan speeds and Fan Only Setting
- Adjustable Air Discharge
- Hidden Vent Control
- Indoor Coil Freeze Control
- Compressor Random Restart Function



Model Identification



Receptacles



Parallel
115V.
15AMP



Tandem
230/208V.
15AMP



Perpendicular
230/208V.
20AMP



COOLING WITH ELECTRIC HEATING MODEL

HEAT PUMP MODEL

Model Number	PTB0923C3C	PTB1223C3C	PTB0911H3C	PTB0923H3C	PTB1223H3C
Voltage Rating	230/208	230/208	115	230/208	230/208
Amp	20	20	15	20	20
Receptacles Type	Perpendicular	Perpendicular	Parallel	Perpendicular	Perpendicular
Cooling Capacity (BTU/h)	9400/9300	11800/11600	9000	9300/9100	11700/11500
Heater Size	3.4 Kw	3.4 Kw	1.2 Kw	3.4 Kw	3.4 Kw
Reverse Cycle Heat (BTU/h)	-	-	8500	8800/8600	11400/11200
EER	10.2	10.1	9.8	10.0	9.6
COP	-	-	3.1	3.1	2.9
CFM Hi	460	460	460	460	460
CFM Med	400	400	400	400	400
CFM Low	300	300	300	300	300
dB(a)	60/58/55	60/58/55	59/57/55	60/58/55	60/58/55
Cooling Amp	4.1/4.4	5.2/5.6	8.8	4.1/4.4	5.6/6.1
Cooling Watts	940/910	1185/1145	960	940/910	1220/1200
Heating Amp (H/P)	-	-	7.7	3.9/3.6	5.9/5.4
Heating Watts (H/P)	-	-	840	830/810	1160/1140
Approximate Weight (Ship)	100	100	100	100	100

PTB 26" SERIES ACCESSORIES



RAB46A Standard Wall Thru The Wall Unit

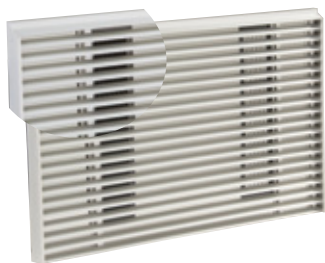
Solid-sided wall case fabricated of galvanized steel with baked-enamel (beige) finish. Welded areas are coated with a sealing compound to help resist rust and corrosion. Polymer gasket surrounds opening to assure tight weather seal.



RAD4A1 Drain Kit Internal/External Drain Kit

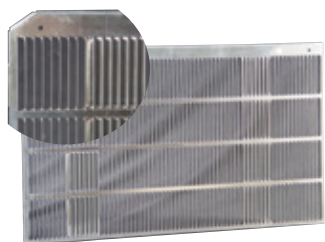
For more positive control of condensate water, the RAD4A1 drain kit routes condensate to the exterior or to the interior of the building through the wall case. Suitable provision (field applied) should be made to connect the drain tube to a drain system in the building. Drain tube assembly is 1/2" O.D. copper.

Note: The RAG14E exterior grille is NOT compatible with the RAD4A1 EXTERNAL drain tube. Use of this grille would require the use of the INTERNAL TUBE configuration to drain the unit.



RAG14E Architectural Louvered Exterior Grille

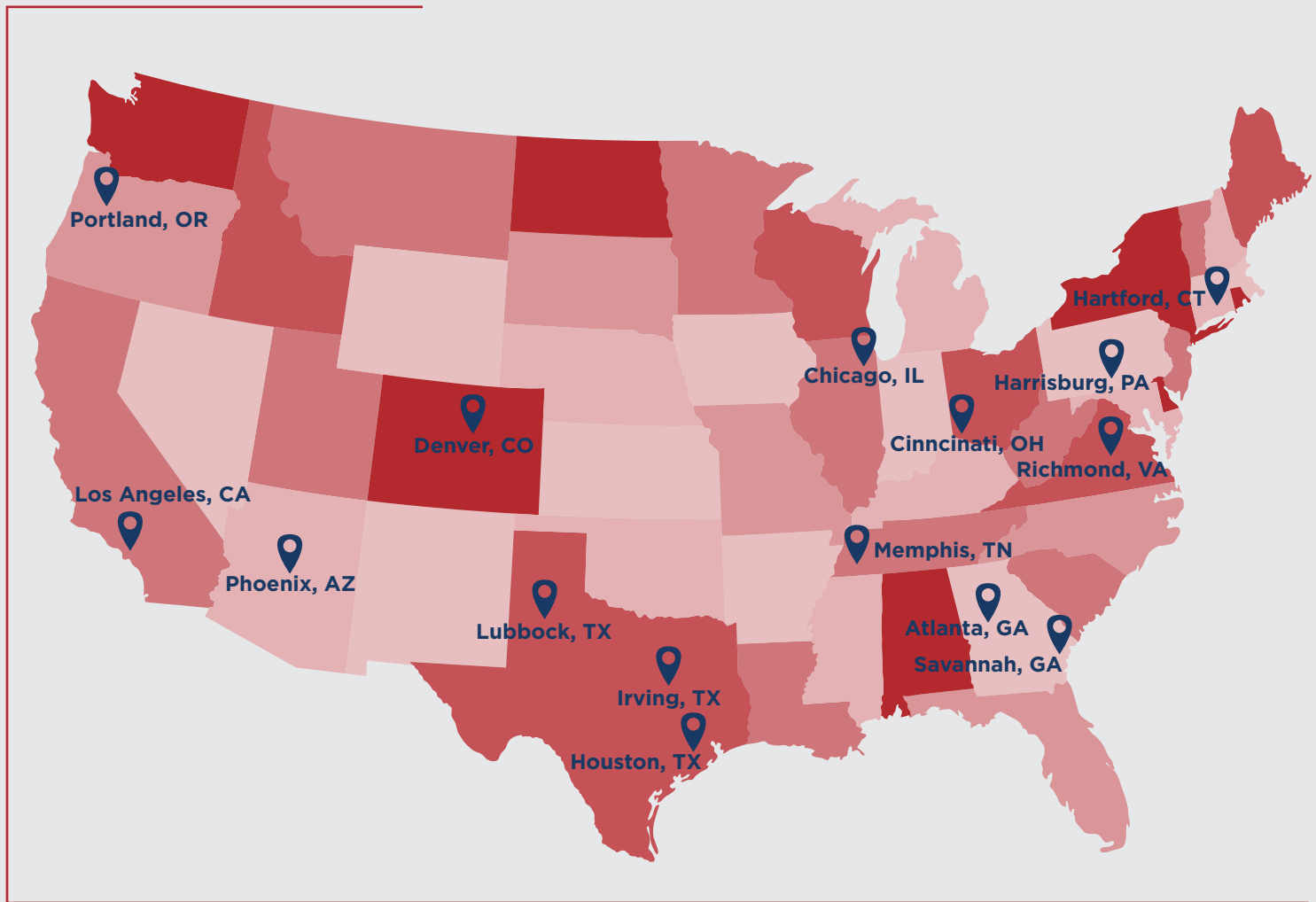
Extruded aluminum grille for application with RAB46A. NOTE: The RAG14E exterior grille is NOT compatible with the RAD4A1 EXTERNAL drain tube. Use of this grille would require the use of the INTERNAL TUBE Configuration to drain the unit.



RAG13A Stamped Aluminum Exterior Grille

The standard exterior grille is made of durable aluminum to protect chassis components and minimize air recirculation.

Prem Will Call Locations



LOCATIONS

PHOENIX, AZ
LOS ANGELES, CA
DENVER, CO
HARTFORD, CT
ATLANTA, GA
SAVANNAH, GA
CHICAGO, IL
CINNCINATI, OH
PORTLAND, OR
HARRISBURG, PA
MEMPHIS, TN
LUBBOCK, TX
IRVING, TX
HOUSTON, TX
RICHMOND, VA



PremAire™ Warranty by Prem Sales, LLC

for warranty service, please call Prem Sales, LLC at 1.888.289.7736

<p>PremAire™ Two-Year Limited Warranty <i>Two year from date of original purchase (2 year)</i></p>	<p>Prem Sales, LLC will repair or replace, free of charge for parts, labor, or unit, any part that becomes defective in materials or workmanship. All warranty work performed by Prem Sales, LLC or Prem Sales, LLC -approved servicer.</p>
<p>PremAire™ 3rd through 5th Year Limited Warranty— Sealed-System Components <i>Years three through five from date of original purchase (3 years)</i></p>	<p>Prem Sales, LLC will repair or replace, free of charge for parts and labor, any sealed-system component that becomes defective in materials or workmanship. Covered sealed-system components included are: evaporator, condenser, compressor, reversing valve, check valve, metering device, and connecting tubing. All warranty work performed by Prem Sales, LLC or Prem Sales, LLC-approved servicer.</p>
<p>PremAire™ 3rd through 5th Year Limited Warranty— Parts or Replacement <i>Years three through five from date of original purchase (3 years)</i></p>	<p>Prem Sales, LLC will replace free of charge specified functional parts that failed due to a defect in materials or workmanship (you will be responsible for any labor or on-site service costs, and all work must be performed by a certified HVAC technician). Covered functional parts are: fan motors, switches, thermostats, heater, heater protectors, compressor overload, solenoids, circuit boards, auxiliary controls, thermistors, frost controls, ICR pump, capacitors, varistors, and indoor blower bearing. Alternatively, at your election, Prem Sales, LLC will replace your unit for \$160 with a direct replacement or reconditioned unit of newer make deemed by Prem Sales, LLC to perform substantially the same function as your original unit. Payment must be received before the replacement unit will ship.</p>
<p>PremAire™ “PremCare” Extended Limited Warranty Available for \$60 at time of original purchase <i>Years two through five from date of original purchase (3 years)</i></p>	<p>If you purchased the “PremCare” Extended Limited Warranty with your original purchase, Prem Sales, LLC will replace your unit, free of charge, if any part becomes defective in materials or workmanship. Replacement unit will be a new unit deemed by Prem Sales, LLC to perform substantially the same function as your original unit.</p>

What is not covered under your PremAire™ Warranty:

- a. Damage, deterioration, or malfunction resulting from misuse, unreasonable use, abuse, accident, or negligence (including from third-party users), or failure to follow installation, use or maintenance instruction in the owner’s manual.
- b. Normal wear and periodic maintenance.
- c. Damages due to freight handling (visual or hidden).
- d. Damages attributable to humidity and temperature extremes, or acts of God.
- e. Failure or damage from corrosion from installation in a coastal environment.
- f. Fuse replacement or circuit breaker resetting.
- g. Damages due to power surges.
- h. Field-installed accessories (wired & wireless wall thermostats, EMS systems, air deflector kits, hand-held remote).
- i. Incidental or consequential damage to personal property caused by possible defects with your unit.

Your PremAire™ Warranty is warranted by Prem Sales, LLC, P.O. Box 3007, Lubbock, TX 79452. This warranty is extended to the original purchaser and any succeeding owner for products purchased for use within the United States. Proof of the original purchase date (e.g. receipt) is needed to obtain service under the warranty.

EXCLUSION OF IMPLIED WARRANTIES: *Your sole and exclusive remedy is product repair as provided in this Limited Warranty. Any implied warranties, including the implied warranties of merchantability or fitness for a particular purpose, are limited to one year or the shortest period allowed by law.*

TO THE MAXIMUM EXTENT PERMITTED BY LAW, PREM SALES, LLC IS NOT RESPONSIBLE FOR DIRECT, SPECIAL, INCIDENTAL OR CONSEQUENTIAL DAMAGES RESULTING FROM ANY BREACH OF WARRANTY OR CONDITION, OR UNDER ANY OTHER LEGAL THEORY. Some countries, districts or states do not allow the exclusion or limitation of relief, special, incidental, consequential or indirect damages, or the limitation of liability to specified amounts, so the above limitations or exclusions may not apply to you.

VISIT US AT WWW.PREMAIRE.CO FOR MORE INFORMATION.



PREMAIRE

Your Premier HVAC Solution Provider

CORPORATE OFFICE

P.O. BOX 3007 • LUBBOCK, TX 79452
O 800.289.7736 • P 806.776.1400
F 806.745.2916 • E sales@premaire.co

IRVING OFFICE

1939 HEREFORD DRIVE • IRVING, TX 75038
O 800.289.7736 • P 806.776.1400
F 806.745.2916 • E sales@premaire.co

WWW.PREMAIRE.CO

